

HOUSING PATHWAYS

for local authorities

- ...develop Net Zero plans**
- ...act on Fuel Poverty**
- ...make homes healthier**



Evidence-based decisions: use data to model options for policy and programme development



Identify each home's needs: model the options for every home, not archetypes



Tailor programmes: Analytics layer property, tenure, flood risk, and socio-economic data



Find efficiencies: Pathways tests 3000 interventions, with up-to-date market pricing



Meet your goals: Pathways tests routes to carbon, SAP and fuel poverty goals against funding options



Drive a green recovery: Pathways identifies job opportunities in all related trades

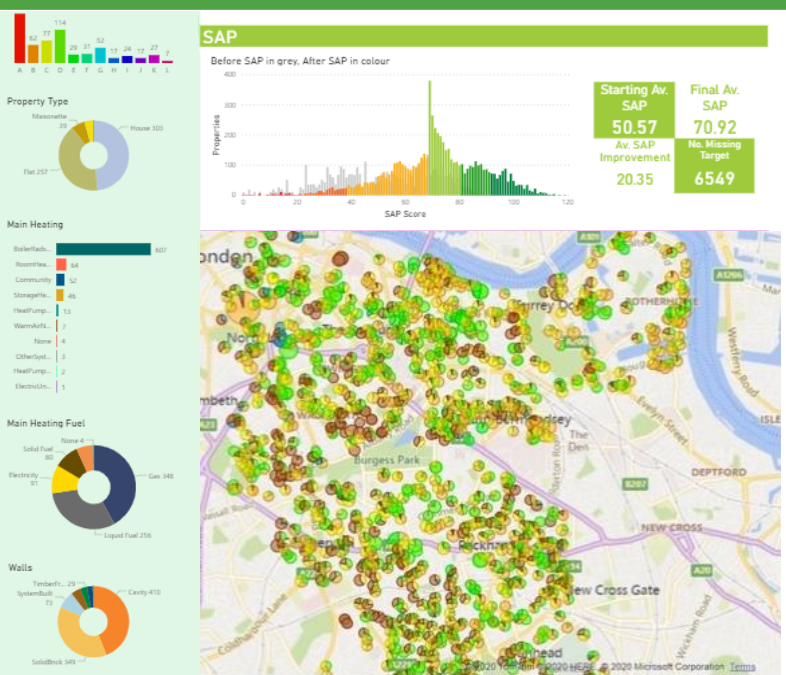
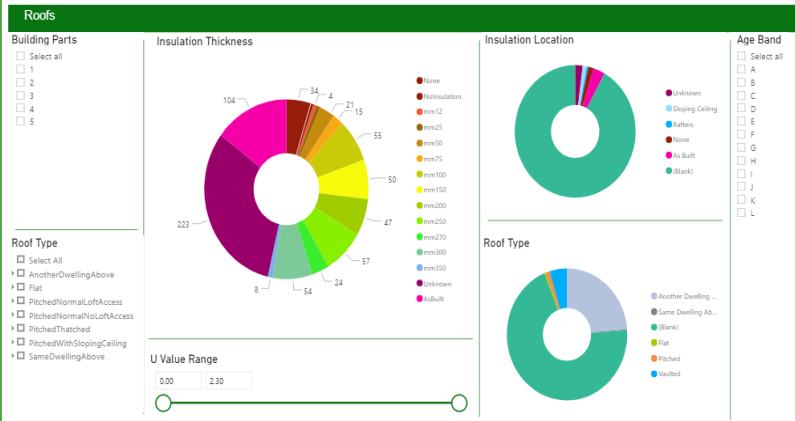
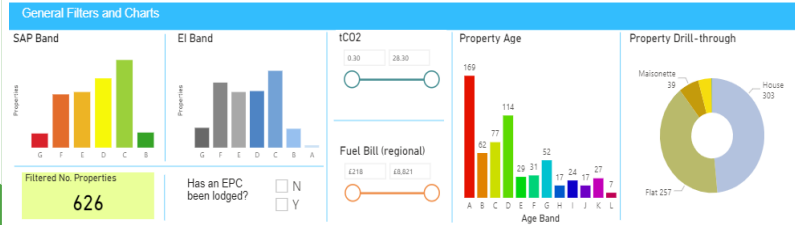
Baseline Analytics

£3,000*

- Housing stock profiling
- SAP, CO₂, kWh, and fuel bill metrics
- Analyse by socio-economic data and by area
- Flood risk, census and fuel poverty filters

Delivering

- Understanding of your current performance
- Identify characteristics to highlight challenges, opportunities and outliers
- Critical first step in developing Fuel Poverty and Net Zero strategies.



Pathways

£4,500*

- Baseline Analytics plus...
- Model two investment and improvement pathways to SAP C and Net Zero
- Report by whole stock, portfolios or property
- Report on employment potential by trade

Delivering

- Pathways to meeting regulatory requirements
- Detail on measures, costs and savings
- Insight on skills to inform a green recovery
- Identify cost, policy and practical barriers

Plan Builder

Free

- Online advice tool
- Locally branded
- Tailored to the home
- Tests relevant options from 3000 measures
- Proposes suitable packages
- Works to owners' goals and budget

Free to local authorities with Pathways
Subject to

- Branding costs apply in Year One
- Additional costs apply for data use by delivery partners

ad, SE15 4AP - anything look wrong?

estimated annual fuel bill saving: £277 (33%)

estimated tonnes CO₂ saved annually: 1.37 (39%)

Selected measures (best carbon saving measures for £20,000):

- Thicker loft insulation: £640, 0.16 tCO₂, in plan
- Draughtproof doors and windows: £242, 0.04 tCO₂, in plan
- Internal wall insulation: £13,048, 0.95 tCO₂, in plan
- Solid floor insulation: £1,780, 0.12 tCO₂, in plan
- Low energy lighting: £84, in plan

Estimated Cost: £15,794

Review

Back a step

All prices exclusive of VAT.

Pricing is for an initial 12-month licence per local authority area, up to a maximum of 150,000 homes. Contact us for pricing for areas with more homes. Additional costs apply to unitary authorities.

WWW.PARITYPROJECTS.COM/PATHWAYS